

STEEPED IN STYLE

Catherine Cleare A NEW YORK CITY RETREAT ART DECO STYLE

The gracious foyer is a mini gallery of French art deco pieces surrounded by mirrors and walnut columns richly trimmed in gold leaf.

The galley kitchen features etched figures on the glass fronts of the burlled maple cabinets. Black granite countertops, brass fixtures and leather accents complete the look.

A symbol of European graciousness, the fabled Carlyle has hosted world leaders and the very wealthy for years. It continues to attract a loyal clientele who covet luxurious splendor. Many come for extended stays; a privileged few, like composer Al Tapper, call the Carlyle home.

When Mr. Tapper commissioned Connecticut designer Catherine Cleare to decorate his apartment on the 18th floor of the Carlyle, he had a vision in mind.

"Mr. Tapper wanted to feel like Cary Grant could walk right in his door and join him for a drink," explained Cleare.

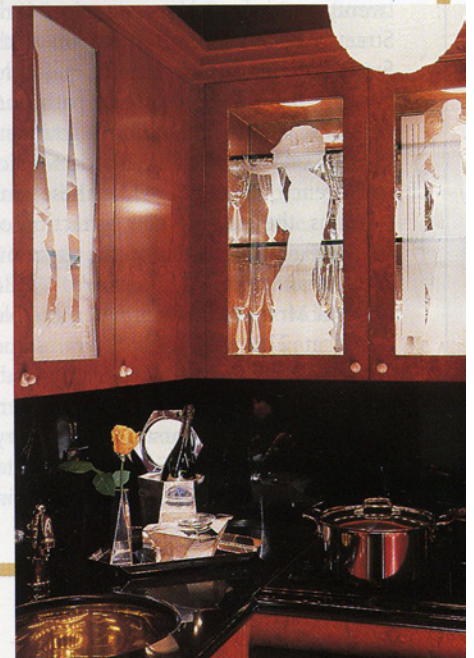
Both client and designer agreed that major renovations were required. The entire 1,500 square foot space was gutted down to cinder blocks in preparation for a

total makeover into the Art Deco masterpiece it is today.

"Space constraints fueled our creativity in the living room, which had to function as living room, dining room and musician's office," says Ms. Cleare.

A custom Edward Fields carpet was meticulously reproduced from an antique Ruhlmann, which, together with Ruhlmann draperies, set the tone of the room with a warm palette of cream, burgundy and rust. Fabrics were chosen for comfort: settee, ottoman and chairs are swathed in chenille; a soft leather club chair complements the seating area. Lamps were made from antique vases.

"In order to make a smooth transition from living to dining room to an office where





☛ This period piano, once owned by Barbra Streisand, was bought at auction and refurbished, revealing beautiful hand-cut vertical walnut casing. Mr. Tapper says he is truly inspired when he writes music on Streisand's piano.

☛ Clever illusions define the master bedroom. The bed is on a raised platform and the ceiling is lowered to create an intimate space.

Mr. Tapper could compose his works, we designed a built-in wall unit, including a dining banquette and wall panels in the living room," explains Cleare.

Designed to be as functional as it is beautiful, the banquette's concealed drawers are filled with Mr. Tapper's musical compositions and important papers. The wall unit opens to reveal a mechanical piano, a working counterpart of the Art Deco piano that graces the other end of the room.

The idyllic city retreat for a man passionate about music and the arts, Al Tapper's Carlyle Hotel apartment is the perfect combination of period European style and up-to-the-minute American comfort.

Catherine Cleare Interiors has offices at 177 Good Hill Road, Weston, CT 06883. Telephone: (203) 226-7662, and at 17760 Candlewood Terrace, Boca Raton, Florida 33487. Telephone: (561) 989-0633. ■



☛ Overall color scheme evokes period art deco style. Carpet is a recreation of an antique Ruhlmann pattern. A painting by Diebenkorn provides a striking accent.

